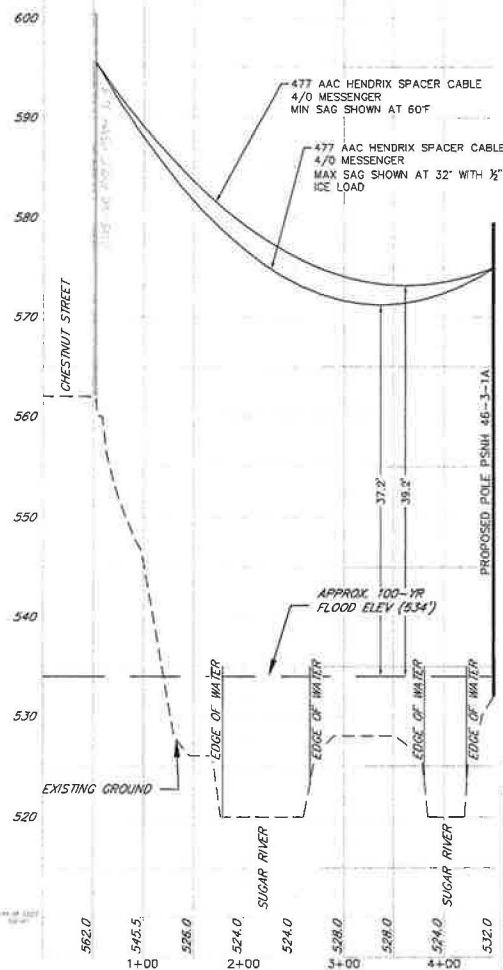


Copyright 2017 ©Thomas F. Moran, Inc.  
48 Constitution Drive, Bedford, N.H. 03110

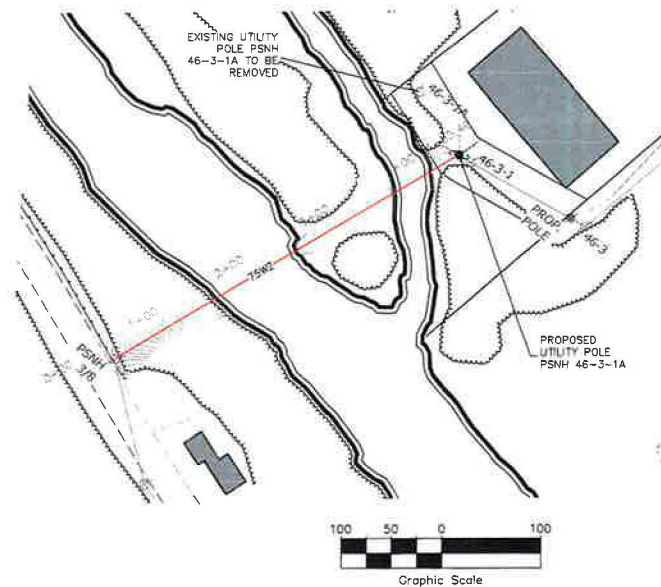
All rights reserved. These plans and materials may not be copied, duplicated, replicated or otherwise reproduced in any form whatsoever without the prior written permission of Thomas F. Moran, Inc.

This plan is not effective unless signed by a duly authorized officer of Thomas F. Moran, Inc.



## NOTES

1. MINIMUM AND MAXIMUM SAG CALCULATIONS PROVIDED BY EVERSOURCE ENERGY



## EXHIBIT 1



Civil Engineers  
Structural Engineers  
Traffic Engineers  
Land Surveyors  
Landscape Architects  
Scientists

48 Constitution Drive  
Bedford, NH 03110  
Phone (603) 472-4488  
Fax (603) 472-9747  
www.tfmoran.com

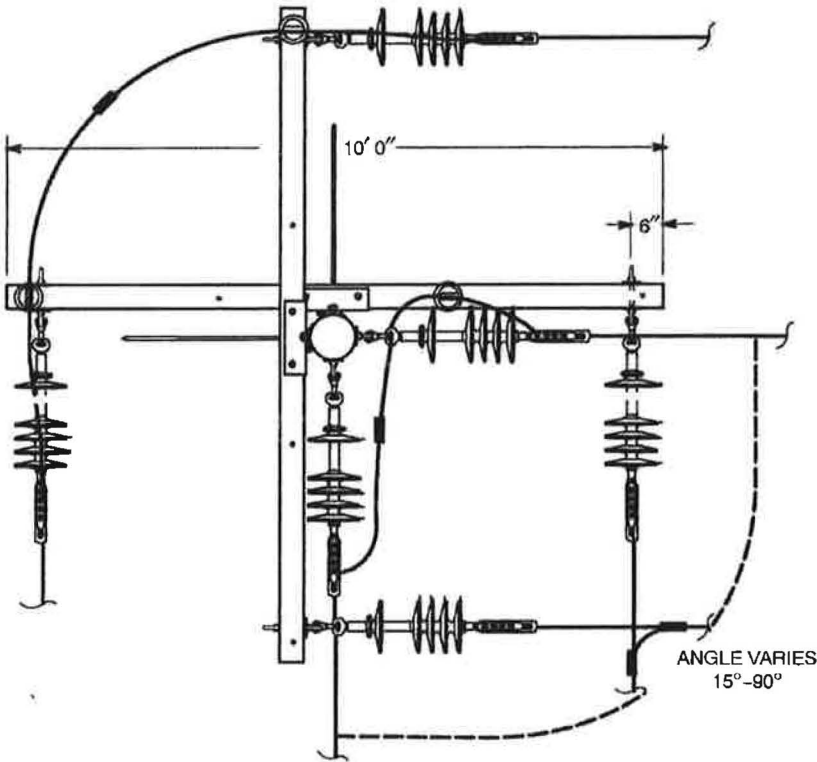
SUGAR RIVER LINE  
CROSSING

**PLAN AND PROFILE**  
**75W2 LINE**

**PREPARED FOR**  
**EVERSOURCE ENERGY**

95796.00 SCALE: 1"=100' 4/19/17  
DR JB CK NG CADFILE 95796.00 SITE.DWG

STRUCTURE LIMIT ANGLES 15° TO 90°



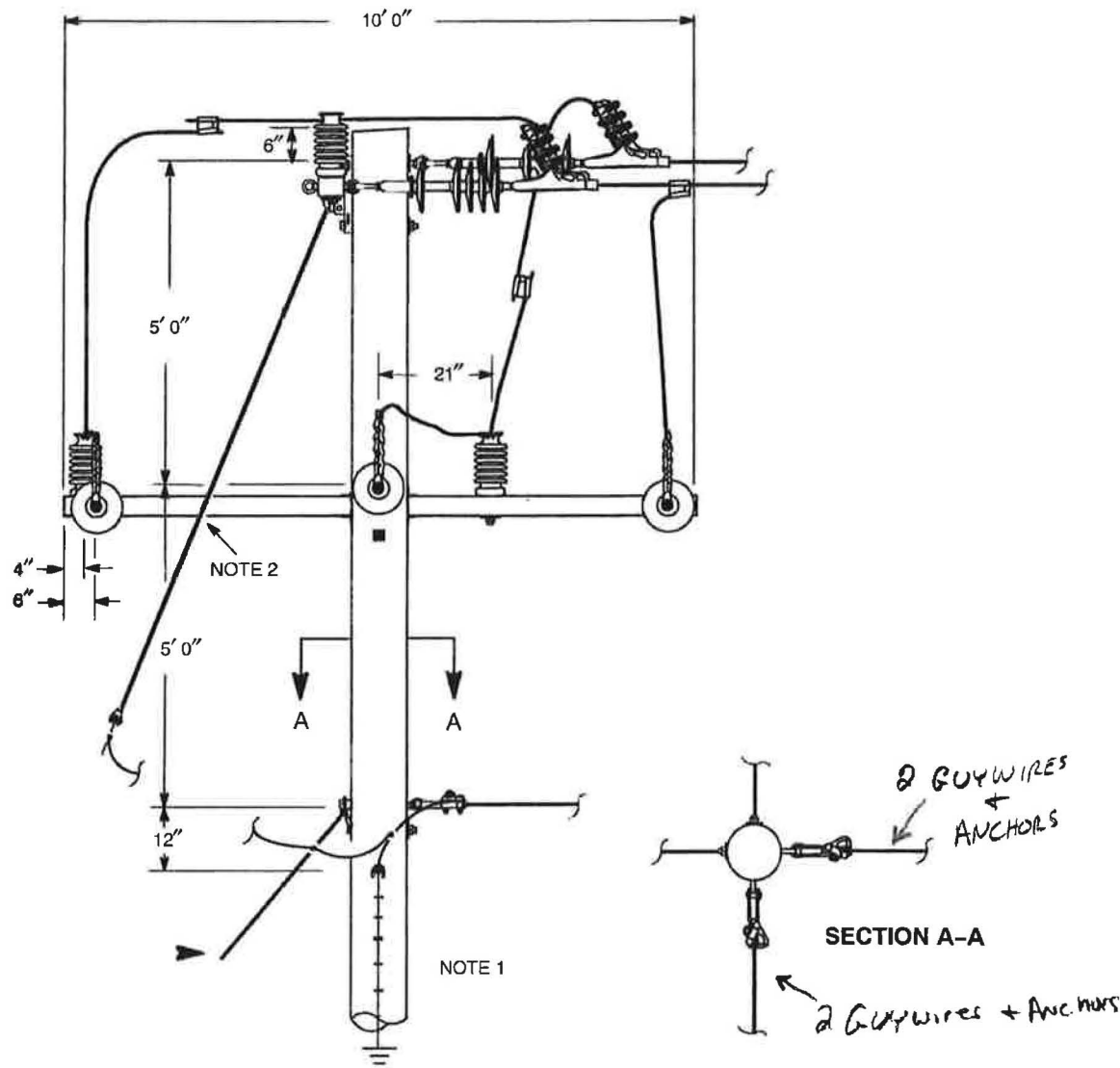
OVERHEAD VIEW OF DTR 10.518

Notes

- 1. See **DTR 16.211**.
- 2. Select guy and associated material from **Section 06**. Select variation with 108 inch fiberglass guy strain insulator for guy opposite primary conductors. Install bare wire guy opposite neutral conductor.
- 3. If angle is less than 80 degrees install additional bisecting anchor from **Section 06**.

ORIGINAL	<b>SINGLE POLE CONSTRUCTION 34.5 KV DEAD-END STRUCTURE – 200 KV BIL</b>				
09/30/04					
APPROVED	<b>EVERSOURCE ENERGY</b>	<b>CONSTRUCTION STANDARD</b>	<b>DTR 10.519</b>	<b>4</b>	
07/21/16 					

STRUCTURE LIMIT ANGLES 15° TO 90°




ORIGINAL	SINGLE POLE CONSTRUCTION 34.5 KV DEAD-END STRUCTURE - 200 KV BIL			
09/30/04				
APPROVED	EVERSOURCE ENERGY			CONSTRUCTION STANDARD
07/21/16				
	DTR 10.518			4

The map shows a section of the Sugar River in Vermont. Key features include:

- Streets:** Washington St, Moody Ave, Cornell St, Dartmouth St, Yale St, Harvard St, Arthur St, First St, Second St, Third St, Parson Ave, Dane Ave, Tutherly Heights Road, Washington St, Chestnut St, Chestnut Hill Road, Juniper Hill Road, Belmont Ave, Hartford St, Osgood Ave, South St, Chase St, Rowhead Skwy, Cossitt Ave, Putnam St, Bailey Ave, Broad St, and El St.
- Zones:** Zone AE (blue hatched), Zone X (white), Zone P (yellow), and Zone S (green).
- Proposed Crossing:** A red arrow points to a 'REVISED 75W2 CROSSING' on the Sugar River.
- Other Labels:** 527, 531, 532, 534, 535, 537, 538, CLAREMONT AND CONCORD RR, SUGAR RIVER, and various street numbers.

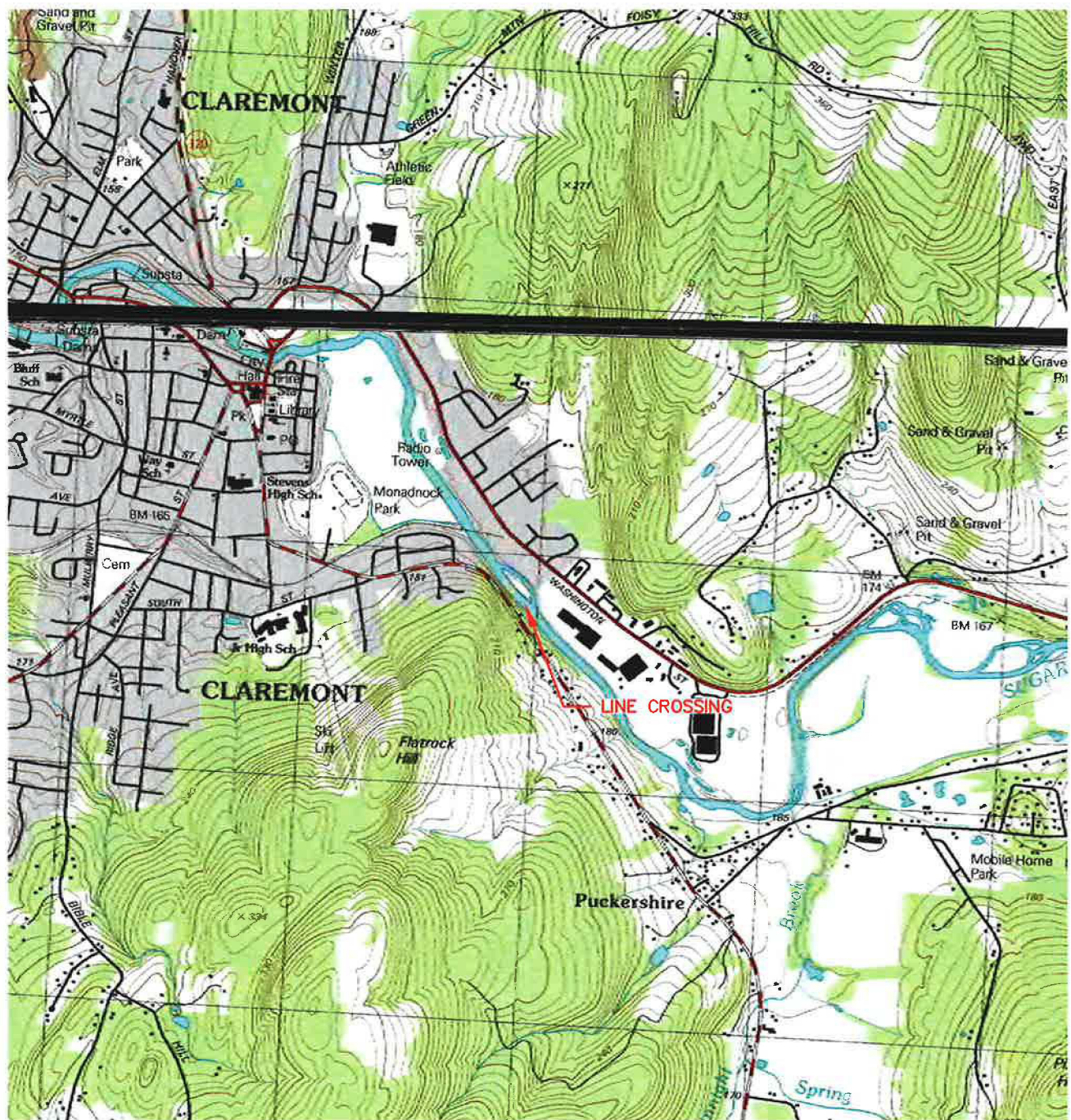
MAP SCALE 1" = 1000'



0 1000 2000 FEET

This is an official copy of a portion of the above referenced flood map. It was extracted using F-MIT On-Line. This map does not reflect changes or amendments which may have been made subsequent to the date on the title block. For the latest product information about National Flood Insurance Program flood maps check the FEMA Flood Map Store at [www.msc.fema.gov](http://www.msc.fema.gov)





## EXHIBIT 4



Civil Engineers  
Structural Engineers  
Traffic Engineers  
Land Surveyors  
Landscape Architects  
Scientists

48 Constitution Drive  
Bedford, NH 03110  
Phone (603) 472-4488  
Fax (603) 472-9747  
www.tfmoran.com

SUGAR RIVER  
CROSSING

**USGS LOCUS MAP**

*PREPARED FOR*  
**EVERSOURCE ENERGY**

FILE	95799-00	SCALE: 1"=2,000'				3/15/17	
		DR	JB	CK	NG	CADFILE	95796-00 Site.DWG